

**ITEM #K1-31-1A**

Military Look, 5 Button Suit with Pockets, 2 Epilets, Tab at Neck, No Vents, Flat Front Pants. Super 150 PR.

Sizes: 38-54R, 42-54L, 39-44S.

Solid Colors: 1 Black, 8 Brown.

**ITEM #K1-31-1B**

All The Same Features As Above, In Heather Pattern.

Sizes: 38-54R, 42-54L, 39-44S.

Color: 1 Charcoal Heather.

**ITEM #K1-31-2**

3 Button Jacket, Ultra Suede with Swirl Design.

Sizes: M - 6X.

Colors: Winter White, Black, Gold.

**ITEM #K1-31-3**

4 Button Suede Jacket with Abstract Insert. Ultrasuede or Wool.

Sizes: M - 6X.

Colors: Gold - Ultra Suede, Brown - Ultrasuede, Black - Wool Blend.

**ITEM #K1-31-4**

5 Button Military Jacket with Epilets. Wool Blend.

Sizes: M - 6X.

Colors: Charcoal, D. Brown, Lt Burgundy.

**ITEM #K1-31-5**

Military Collar with Epilets, 12 Button , 4 are Functional with Tabs, Wavy Velvet Pattern.

Sizes: M - 6X.

Colors: Black, Cognac ( Brick ), Brown.

**ITEM #K1-31-6**

Tweed Look 3 Button Jacket with Matching Color Flat Fur Trim. Wool Blend.

Sizes: M - 6X.

Colors: Beige ( Camel ), Black ( Grey ).

**Special Order Items! Ship Out In 5 Business Days**



**ITEM #K1-32-1**

3 Button Suit with Pic Stitching Details, Double Vents, Multi Stripe Pattern. Super 150 Hand. Wool Blend.

Sizes: 38 - 56R, 40 - 56L, 36 - 46S.

Color: Black.



**ITEM #K1-32-2**

3 Button Suit with Pic Stitching Details, Double Vents, Multi Stripe Pattern. Super 150 Hand. Wool Blend.

Sizes: 38 - 56R, 40 - 56L, 36 - 46S.

Colors: Grey / Lt Grey.



**ITEM #K1-32-3**

3 Button Suit with Pic Stitching Details, Double Vents, Multi Stripe Pattern. Super 150 Hand. Wool Blend.

Sizes: 38 - 56R, 40 - 56L, 36 - 46S.

Colors: Charcoal / Gold



**ITEM #K1-32-4**

3 Button Suit with Pic Stitching Details, Double Vents, Multi Stripe Pattern. Super 150 Hand Wool Blend.

Sizes: 38 - 56R, 40 - 56L, 36 - 46S.

Colors: Khaki Weave with Stripe.



**ITEM #K1-32-5**

3 Button Suit with Pic Stitching Details, Double Vents, Solid Pattern. Super 150 Hand. Wool Blend.

Sizes: 38 - 56R, 40 - 56L, 36 - 46S.

Colors: 2550 Black, 2630 Navy, 3812 Brown, 2485 Charcoal, 2422 Grey, 8901 White

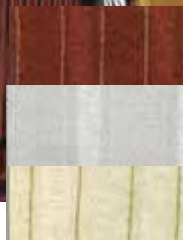


**ITEM #K1-32-6**

3 Piece Suit, 6 Button Jacket with Wide Lapels, Back Pleat, Vest With Lapels, V Bottom, Multi Stripe. Poly / Rayon/.

Sizes: 38 - 56R, 38 - 56L.

Colors: Wine, Silver, Taupe.



**Special Order Items! Ship Out in 5 Days**

**ITEM #K1-33-1**

3 Piece Suit with 4 Buttons, Gangster Stripe Pattern, Peak Lapels, Double Vents, Wide Leg Pants. Poly/Rayon Blend.

Sizes: 38 - 56 R, 38 - 56 L.

Colors: Black/White, Black/Red, White/Black, White/Red

**ITEM #K1-33-2**

2 Piece Suit, 3 Button Jacket with Unique Allover Foil Design, Solid Color Pants, Black Wide Leg Pants. Stretch Polyester. (Sheen in Picture is from Lights On Foil)

Sizes: 38 - 56 R, 38 - 56 L.

Colors: Black/Turq, Black /Gold, Black /Silver.

**ITEM #K1-33-3**

3 Piece Suit, 3 Buttons, Gangster Stripe, Wide Notched Lapels, Double Vents with Wide Leg Pants. Poly/Rayon Blend.

Sizes: 38 - 56 R, 38 - 56 L.

Colors: Black/White, Black/Red, White/Black, White/Red.

**ITEM #K1-33-4**

3 Piece Suit, 3 Buttons, tonal Box Pattern with Foil Sparkle Overlay, Wide Lapels, Double Vents. Poly/Rayon Blend.

Sizes: 38 - 56 R, 38 - 56 L.

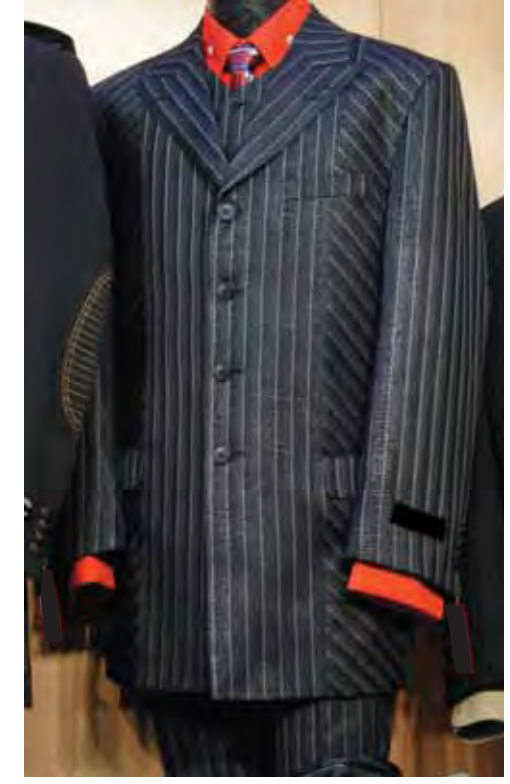
Colors: (Brn)Mustard, Wine, Navy, Black.

**ITEM #K1-33-5**

3 Piece Suit, 3 Buttons, 45 Cut Slant Close, Peak Lapels, Shadow Pinstripe with Sparkle Overlay, Double Vents, Wide Leg. Poly / Rayon Blend.

Sizes: 38 - 56 R, 38 - 56 L.

Colors: Black, Burgundy, Olive.

**ITEM #K1-33-6**

3 Piece Suit, 4 Buttons with Multi Directional Gangster Stripes and Texture, Double Vents, Wide Leg Pants. Poly / Rayon Blend.

Sizes: 38 - 56 R, 38 - 56 L.

Colors: Black, Brown, Gold.

**Special Order Items! Ship Out in 5 Business Days**



**ITEM #K1-34-1**

Mandarin Collar 2 Button Suit, Shadow Stipe.  
Poly / Rayon Blend.

Sizes: 38 - 56 R, 38 - 56 L.

Colors: Black, White, Chestnut.



**ITEM #K1-34-2**

3 Piece Suit, 3 Buttons with Rounded Lapels, Genuine  
Denim with Pic Stitched Edging. 100% Cotton.

Sizes: 38 - 56 R, 38 - 56 L.

Color: Blue.



**ITEM #K1-34-3**

3 Piece, 3 Buttons Suit. Poly/Rayon Blend.

Sizes: 38 - 56 R, 38 - 56 L.

Colors: Black, Navy, White, Taupe



**ITEM #K1-34-4**

3 Piece Suit, Hidden Buttons, Double Vents,  
Wide Leg Pants. Polyester.

Sizes: 38 - 56 R, 38 - 56 L.

Colors: Grey, Gold, Navy.



**ITEM #K1-34-5**

3 Piece Suit, 6 Buttons with Wide Lapels, Double Vents,  
22" Wide Leg Pants. Polyester.

Sizes: 38 - 56 R, 38 - 56 L.

Colors: Olive, Black, Navy, Grey, Purple, Royal.



**ITEM #K1-34-6**

3 Button Suit with 4 Cargo Pockets, Epilets, Custom Pic  
Stitching, Double Vents, Tonal Pattern. Poly / Rayon.

Sizes: 38 - 56R, 38 - 56L.

Colors: Black, Navy, White, Taupe

**Special Order Items Above, Ship Out in 5 Business Days**

**SUPER 120 ITALIAN WOOL GABARDINE.**

**Crafted to Keep It's Shape!**



**ITEM #K1-35-1**

Hand Crafted "Classic Italian Wool", \*2 Button Suit with Side Vents. No Pleat Pant Lined to the Knee. Crafted To Keep It's Shape, Compare to Canali, - November Delivery. Super 120 Italian Wool Gabardine.\*Picture Shows 3 Buttons, Actual Suit Ships with 2 Buttons, and Longer Lapels.  
 Sizes: 38-52 R, 40-52L, 38S-46S.  
 Colors: 40-2SV Navy, 43-2SV Beige, 45-2SV Black, 54-2SV Charcoal, 59-2SV Olive, 61-2SV M. Grey, 64-2SV Lt Olive

**SUPER 120 ITALIAN WOOL GABARDINE.**

**Crafted to Keep It's Shape!**



**ITEM #K1-35-2**

Hand Crafted "Classic Italian Wool", 2 Button Pinstriped Suit with Side Vents.No Pleat Pant Lined to the Knee, Crafted to Keep It's Shape. Compare to Canali.

Super 120 Italian Wool Gabardine.  
 Sizes: 38-52 R, 40-52L, 38S-46S.  
 Colors: 320SV Charcoal Grey / Blue & Tan Stripe, 321 SV Light Grey / White and Lavender Stripe, 322SV Med. Grey / Lt Grey Stripe .

**SUPER 120 ITALIAN WOOL GABARDINE.**

**Crafted to Keep It's Shape!**



**ITEM #K1-35-3**

Hand Crafted "Classic Italian Wool", \*2 Button Subtle Shadow Striped Suit with Side Vents. No Pleat Pant Lined to the Knee Crafted to Keep It's Shape. Compare to Canali, Super 120 Italian Wool Gabardine.\*Picture

Shows 3 Buttons, Actual Suit Ships with 2 Buttons, and Longer Lapels.  
 Sizes: 38-52 R, 40-52L, 38S-46S.  
 Colors: 328SV Black / Lavender Stripe, MC327 Black / Black Shadow Stripe.

**SUPER 120 ITALIAN WOOL GABARDINE.**

**Crafted to Keep It's Shape!**

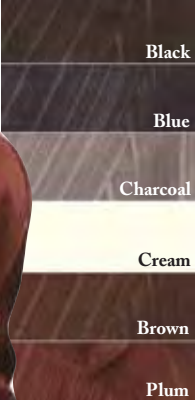


**ITEM #K1-35-4**

Hand Crafted "Classic Italian Wool", 2 Button Tonal Multi Stripe Suit with Side Vents. No Pleat Pant Lined to the Knee. Crafted to Keep It's Shape. Compare to Canali.

Super 120 Italian Wool Gabardine.  
 Sizes: 38-52 R, 40-52L, 38S-46S.  
 Colors: 323 Brown Multi, 314 Navy Multi.

**Special Order Items Above, Ship Out In 2-3 Business Days**



**ITEM #K1-36-1**

3 Piece Suit, Featuring 6 Paired Button Stand with Back Pleats and Double Pockets, matching 6 Button Lapel Vest. Multi Stripe Pattern. Polyester.

Sizes: 36 - 60 R, 38 - 60L.

Colors: 31-Black, 32-Blue, 33-Charcoal, 34-Cream, 35-Brown, 37-Plum.



**ITEM #K1-36-2**

3 Piece Suit, 3 Button with Back Pleat and Velvet Collar, Double Breasted Velvet Vest. Plaid Pattern. Poly/Rayon.

Sizes: 36 - 60R, 38 - 60L.

Colors: 22-Navy Plaid, 23-Charcoal Plaid, 24-Cream Plaid, 26-Mustard Plaid.



**ITEM #K1-36-3**

3 Piece Suit, Featuring 6 Paired Button Stand with Back Shoulder Pleats and Double Pockets, Slant Closure Skin Pattern Vest with Double Pockets. Polyester.

Sizes: 36 - 60R, 38 - 60L.

Colors: 41-Black, 43-Charcoal, 44-Dk.Taupe, 46-Dk.Olive, 47-Purple.



**ITEM #K1-36-4**

2 Piece Suit, Featuring 6 Paired Button Stand with Paddle Lapels, Back Shoulder Pleats and Double Jacket Pockets with Multi Stripe Pattern. Polyester.

Sizes: 36 - 60R, 38 - 60L.

Colors: 51-Black, 52-Blue, 53-Charcoal, 54-Beige/Taupe, 55-Brown/Chocolate, 56-Mustard/Gold.

**Special Order Items Above, Ship Out in 5 Business Days**

**ITEM #K1-37-1**

3 Button Suit, Double Vents, Solid Color. Poly.

Sizes: 36 - 54R, 40 - 60 L, 36 - 46S.  
Colors: 01 Black, 02 White, 06 Olive, 04 Navy, 05 Brown, 65 Clay Khaki.

**ITEM #K1-37-2**

3 Piece Suit, 3 Buttons with Vest, Shadow Stripes. Poly.

Sizes: 36 - 54R, 40 - 60 L, 36 - 46S.  
Colors: 02 White, 05 Brown, -04 Navy, 75 Tan, 01 Black.

**ITEM #K1-37-3**

3 Piece Suit, 3 Buttons with Side Vents, Pinstripe Pattern. Super 150 Poly/Rayon.

Sizes: 36 - 54R, 40 - 60 L, 36 - 46S.  
Colors: 12 Cream / Black, 05 Brown / Tan, 04 Navy / Blue, 03 Grey / White, 01 Black / White.

**ITEM #K1-37-4**

3 Button Suit with Solid Pattern. Super 150 Poly/Rayon.

Sizes: 36 - 54R, 40 - 60 L, 36 - 46S.  
Colors: 12 Cream, 75 Lt Tan, 95 Stone, 03 M. Grey, 01 Black, 55 Dk Tan, 05 Brown, 06 Olive, 04 Navy, 01 Black.

**ITEM #K1-37-5**

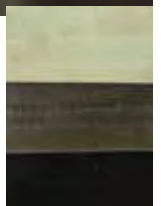
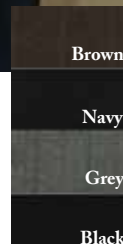
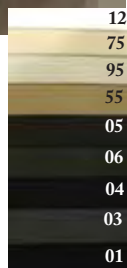
3 Button Suit, with Subtle Herringbone Pinstripe. Super 150 Poly/Rayon.

Sizes: 36 - 54R, 40 - 60 L, 36 - 46S.  
Colors: Black, Navy, Brown, Grey.

**ITEM #K1-37-6**

3 Piece Suit, 3 Buttons with Double Vents and Vest. Corduroy Pattern. Cotton Blend.

Sizes: 36 - 54R, 40 - 60 L, 36 - 46S.  
Colors: 25 Tan, 05 Brown, 01 Black



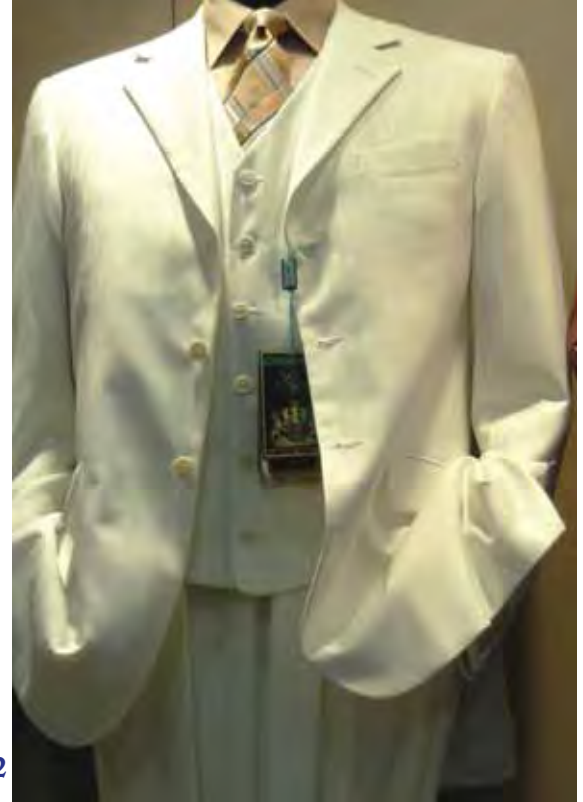
**Special Order Items Above, Ship Out in 5 Business Days**



**ITEM #K1-38-1**

3 Piece Suit, 3 Button with Solid Pattern. Super 150 Poly/Rayon.

Sizes: 36 - 54R, 40 - 60 L, 36 - 46S.  
Colors: 12 Cream, 95 Stone, 03 M. Grey, 01 Black, 55 Dk Tan, 05 Brown, 04 Navy, 01 Black.



**ITEM #K1-38-2**

3 Piece Suit, 3 Buttons with Side Vents, Tone on Tone Multi Stripes, Vest with Lapels. Super 150 Poly/Rayon.

Sizes: 36 - 54R, 40 - 60 L, 36 - 46S.  
Colors: 12 Cream, 65 Beige, 01 Black.



**ITEM #K1-38-3**

3 Piece Suit, 3 Buttons with Pleated Lapel, Matching Vest with Pleated Lapel, Back Pleats, Back Belt with Buttons, Double Vents, Tone on Tone Shadow Stripes. Polyester.

Sizes: 38 - 56R, 40 - 56L.  
Colors: Black Combo, White Combo, Tan Combo, Silver Combo, Brown Combo. Gold Combo.



**ITEM #K1-38-4**

3 Piece Suit, 4 Buttons with Ticket Pocket, Back Pleat. Zig Zag Vest with Lapels. Polyester.

Sizes: 38 - 56R, 40 - 56L.  
Colors: Black, White, Olive, Bone, Red, Brick.



**ITEM #K1-38-5**

3 Piece Suit, 6 Buttons, Wide Lapels, Metallic Sparkle Shadow Stripes, Back Pleat, Double Vents, Back Belt, Vest with Wide Lapels. Polyester.

Sizes: 38 - 56R, 40 - 56L.  
Colors: Black, Purple, Burgundy, Off White, Brown, Sky.

**Special Order Items! Ship Out In 5 Business Days**



**ITEM #K1-39-1**

3 Piece Suit, 3 Buttons with Twill Pattern Gangster Pin Stripe, Double Vents, Vest, Wide Leg Pants. Super 130 Poly Rayon.

Colors: 04 Brown/Blue, 11 Grey / Grey, 00 Black / Black.  
 Sizes: 38 - 56R, 40 - 56L.



**ITEM #K1-39-2**

3 Piece Suit, 3 Buttons with Peak Lapels, Wide Leg Pants, Multi Stripe Pattern. Super 130 Poly Rayon.

Colors: Grey/Purple, Black / Purple, Navy / Purple.  
 Sizes: 38 - 56R, 40 - 56L.



**ITEM #K1-39-3**

2 Piece Suit, 3 Buttons, Peak Lapels, 33" Length, Ticket Pocket with Vest. Wide Leg Pants, Fad Weave Stripe. Super 130 Poly Rayon.

Colors: 393 Tobacco, 04 Charcoal.  
 Sizes: 38 - 56R, 40 - 56L.



**ITEM #K1-39-4**

3 Piece Suit, 2 Buttons, 33" Length, Peak Lapels, Ticket Pocket, Vest, Wide Leg Pants, Fade Stripe Weave. Super 130 Poly Rayon.

Colors: 18 Sand Combo, 01 Silver Combo.  
 Sizes: 38 - 56R, 40 - 56L.



**ITEM #K1-39-5**

3 Piece Suit, 4 Buttons, Peak Lapels, Vest with Lapels, Double Vents, Shadow Stripe Pattern, Wide Leg Pants Super 130 Poly Rayon.

Colors: 04 Chocolate, 22 Dk. Blue, 11 Charcoal.  
 Sizes: 38 - 56R, 40 - 56L.



**ITEM #K1-39-6**

3 Piece Suit, 3 Buttons with Action Back Pleats, Sharkskin Stripe, Wide Leg Pants. Super 130 Poly Rayon.

Colors: 31 Grey, 22 Blue.  
 Sizes: 38 - 56R, 40 - 56L.



**Special Order Items! Ship Out In 5 Business Days**

MENS SUITS



**ITEM #K1-40-1**

3 Piece Suit, 3 Buttons , 33" Length, Ticket Pocket, Plaid Pattern, Wide Leg Pants. Super 130 Poly Rayon.

Color: 39 Taupe /Blue.  
 Sizes: 38 - 56R, 40 - 56L.



**ITEM #K1-40-2**

3 Button Suit with Fitted Jacket, Double Pleated Pant, Gangster Stripe, Side Vents. Super 130 Poly Rayon.

Colors: Grey /Lt Grey, Black / White.  
 Sizes: 38 - 56R, 40 - 56L, 36-46S.



**ITEM #K1-40-3**

3 Button Suit, with Fitted Jacket, Side Vents, Multi Striped Pattern, Flat Front Pants. Super 130 Poly Rayon.

Color: Sand. Sizes: 38 - 56R, 40 - 56L.



**ITEM #K1-40-4**

3 Button Suit, Double Vents, Double Pleated Pants, Multi Striped Pattern. Super 130 Poly Rayon.

Color: Grey. Sizes: 38 - 56R, 40 - 56L, 36-44S.



**ITEM #K1-40-5**

3 Button Suit with Lapel Vest, Pindot Pattern. Super 130 Poly Rayon.

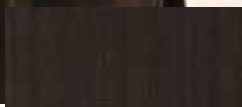
Color: Dk. Grey / Lt Grey & Purple.  
 Sizes: 38 - 56R, 40 - 56L, 36-44S.



**ITEM #K1-40-6**

3 Button Suit, Fitted Jacket, 1/2" Striped Shadow Pattern, Double Vents, No Pleat Pants. Super 130 Poly Rayon.

Color: Chocolate / Brown.  
 Sizes: 38 - 56R, 40 - 56L, 36-44S.



**Special Order Items! Ship Out In 5 Business Days**